



## CyberSecure IPS Critical Infrastructure Pathway Monitoring Maintenance Hole Protection System™

Underground infrastructure pathways are one of the least protected and most vulnerable assets.

Underground infrastructure pathways reflect a ubiquitous and global presence to provide secure, high-speed communications to nearly every household, business, school, agency and military base in the world. The CyberSecure IPS Maintenance Hole Protection System™ (MPS) was designed to provide real-time monitoring of network infrastructure access points such as maintenance-holes and hand-holes over long distances utilizing zero-power fiber optic sensors. Each sensor can detect Open/Close conditions, fiber loss (dB), and fiber cuts at each sensor location. The MPS solution offers the highest level of monitoring and protection in the world and is fully integrated with CyberSecure IMS™ to provide immediate dispatching when unauthorized access is detected.

### System Highlights:

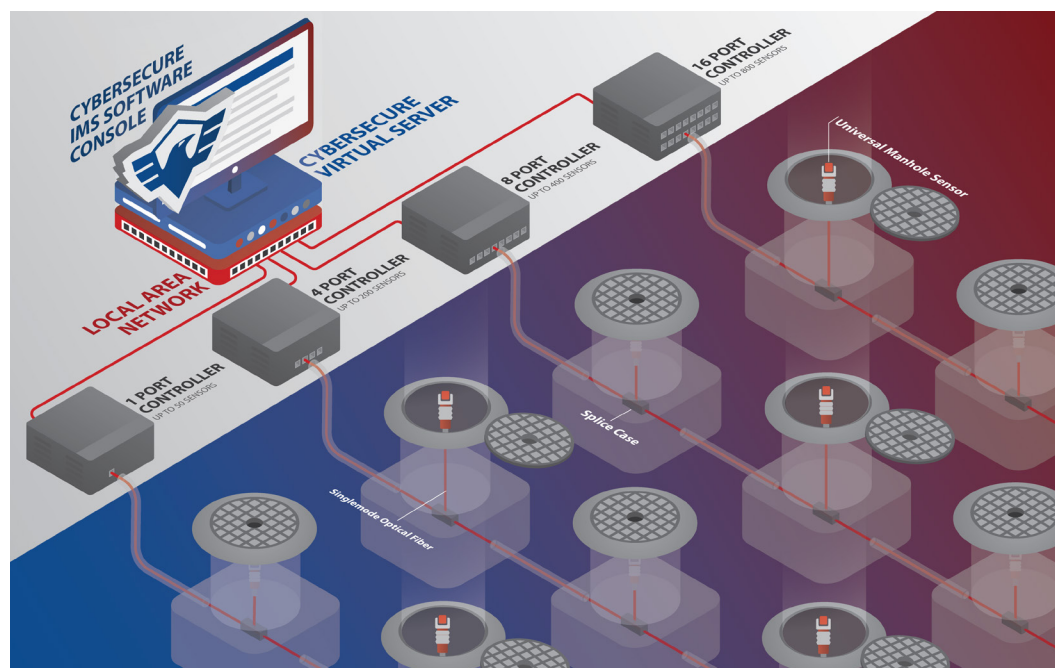
- ▶ High power, low noise swept wavelength laser
- ▶ Up to 160nm spectral scanning and data acquisition
- ▶ Supports up to 800 sensors per controller
- ▶ Sensors contain no electronic components
- ▶ Sensors require no electrical power, and emit no signals
- ▶ Immune to electromagnetic and radio frequency interference
- ▶ Runs on state-of-the-art fiber optic technology

### Centrally Manage The MPS™ system with CyberSecure IMS™

The CyberSecure IMS™ software can monitor thousands of covers simultaneously, and every cover is individually identified and mapped. Individual identification allows immediate positioning of intrusion attempts. This facilitates an immediate focused response by security or law enforcement personnel via the CyberSecure IMS™ Alarm Management feature.

### Other Features Include:

- ▶ Real-time Alerts
- ▶ Case Management
- ▶ Event Logging/Reporting
- ▶ Fiber Forensics™
- ▶ False Alarm Mitigation
- ▶ API Integration



## The Cyber Sensor Controller™ (CSC)

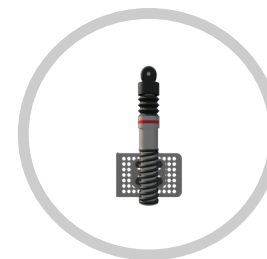
The Cyber Sensor Controller™ (CSC) employs full spectral scanning and data acquisition, providing measurements with high absolute accuracy. The controller and sensors are monitored and managed by CyberSecure IMS™ (Infrastructure Monitoring System), our U.S. Government accredited alarm / dispatch management software. The CSC provides connectivity to the first sensor in every sensor string, continuously monitors open/close conditions, fiber loss (dB), and fiber cuts. The CSC provides IP connectivity to the CyberSecure™ IMS server which allows for global management of multiple locations simultaneously.



- ▶ 1ch, 4ch, 8ch, and 16 channels
- ▶ Up to 35dB dynamic range
- ▶ Up to 50 sensors per channel

## Maintenance Hole Sensor

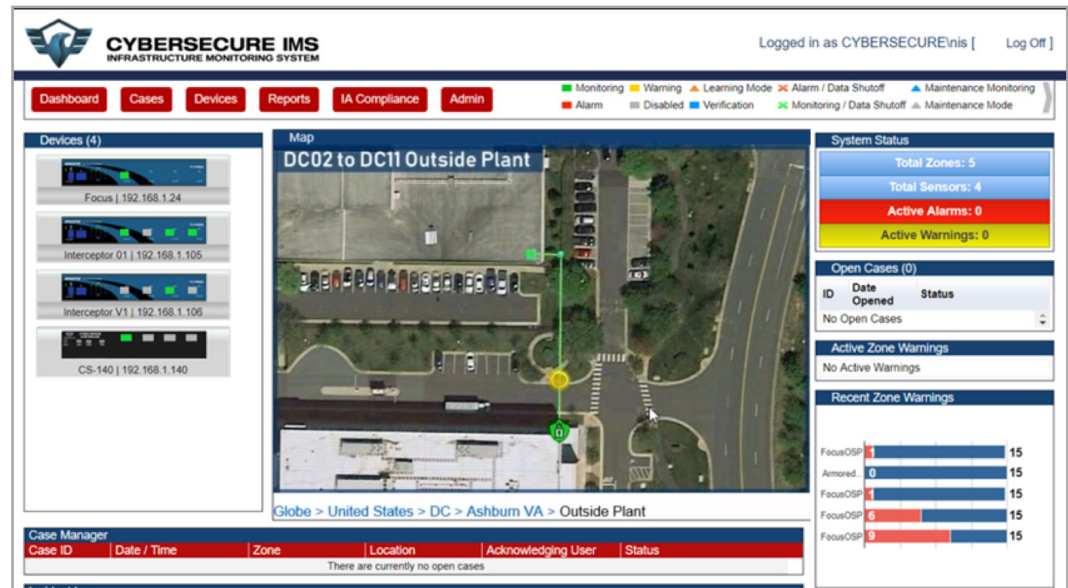
CyberSecure Maintenance Hole sensors contain no electronic components, require no electrical power, and emit no electric signals. Due to their optical design, the Universal Cyber Sensors™ utilize a single strand of standard single-mode fiber (SMF) and are inherently immune to electromagnetic and radio frequency interference. They are IP68 rated, functions under water, and can operate in various climates.



- ▶ Measures Open/Close and dB loss
- ▶ Easy to deploy
- ▶ Equipped with 2 fiber pigtails
- ▶ Passive and Powerless



## CyberSecure Infrastructure Monitoring System™ (IMS)



CyberSecure IMS™ Console

Monitor and control the CyberSecure MPS™ solution with the versatile IMS™ software platform. CyberSecure IMS™ is the only DOD accredited software solution with a Certificate of Networkworthiness and also facilitates site-specific Risk Management Framework (RMF) authorizations for critical infrastructure monitoring which consolidates multiple product sets designed to protect, defend, and monitor government and commercial network infrastructures. The user friendly dashboard provides clear situational awareness of your environment.

### Key System Highlights:

- ▶ **Just Press Play™** -with this feature, administrators can go back to any point in time to play back the events of the security incident on the console.
- ▶ **Fiber Forensics™** -captures characteristics of real-time intrusion attempts and displays a graphical representation of every optical disturbance as it occurs.
- ▶ **False Alarm Mitigation** -reduce false alarms by as much as 99% with our calibration features.
- ▶ **CyberSecure IMS Zonar w/Eagle Eye Active Intruder Alert System™**-provide additional intrusion warnings for first responders to on-going attacks before they arrive in the danger zone.

### CyberSecure IPS Custom Solutions

Not exactly what you're looking for? We work closely with our clients to provide them the best solutions for their needs. Contact us to schedule a meeting or demo of our solutions.

GET IN TOUCH

1-844-653-1018 | [sales@cybersecureips.com](mailto:sales@cybersecureips.com) | [www.cybersecureips.com](http://www.cybersecureips.com)